

## What can I do?

### Stop new nests establishing

Hibernating queens become active again from September as the weather warms up. They will not be able to establish a new colony if trapped. There is a narrow window of opportunity to catch queens now. Each nest can grow to 3,000-10,000 wasps.

DIY lures such as honey mixes are not recommended as they can kill our native insects and honeybees.

Commercial lure traps are useful in early spring and late autumn to trap queens.

To trap queens you can:

- Purchase a trap and lure from a rural supply store or online from companies like [Pestrol](#) or [Easy Pest Supplies](#)
- Apply for a trap from the Braidwood European Wasp Offensive community group. They have a limited number of traps with E. Wasp-specific lure available locally for urban residents in Braidwood at cost price (\$40 for season). Register your interest by emailing [Braidwoodewaspoff@gmail.com](mailto:Braidwoodewaspoff@gmail.com)
- Use a contractor to set traps at your business or on your property (see details right).



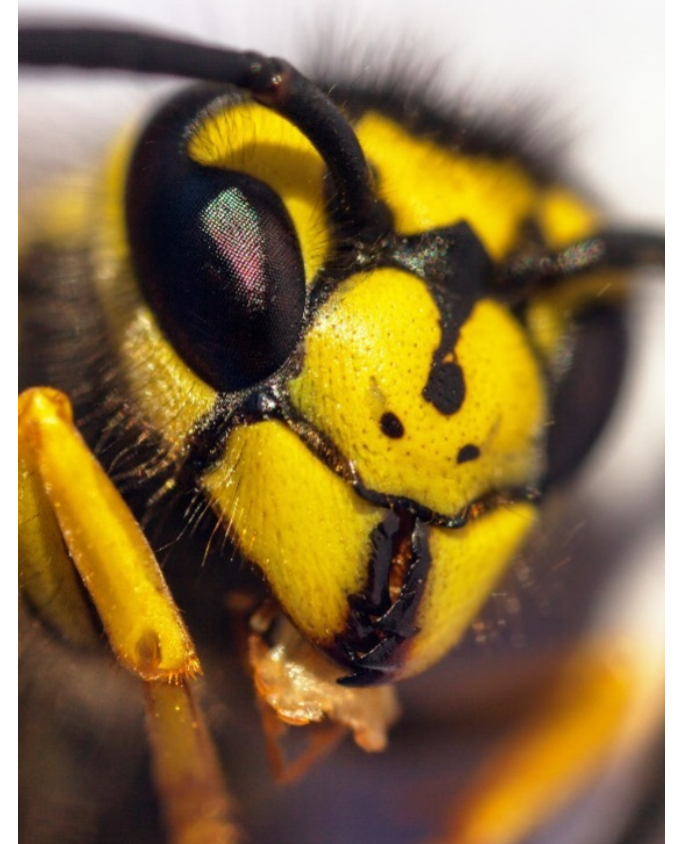
### Discourage wasps

- Do not leave fallen fruit or food scraps lying around the yard.
- Avoid leaving uneaten pet food or dog bones outside.
- Make sure rubbish bins have tight fitting lids
- Keep compost covered at all times.
- Keep swimming pools covered when not in use.
- Cover exposed food at picnics and barbecues.
- Don't drink out of cans or bottles, use clear containers or a straw.

### Deal with established nests

- Wasps are extremely dangerous and will attack en masse. It is not recommended to try to destroy a nest on your property using dusts and powders available from hardware and rural supply outlets.
- If the nest is on public land: Report the nest to the council on **1300 735 025** and they will destroy it.
- If the nest is on private land: The safest way to treat a nest is to engage a pest control contractor. Contractors can be found via the eWasp website or phone app, or by searching on Facebook or Google for European Wasp pest control in your local area. Euro Wasp Control, the local contractor previously engaged by Queanbeyan Palerang Council for wasp control, can be contacted on **0487 870 109**.

# EUROPEAN WASPS IN BRAIDWOOD



Braidwood businesses, community groups and residents are working together to try to rid our town of the dangerous influx of wasps and to keep people, pets and livestock safe. Here is a simple guide to what they are and what you can do to help eradicate them



## European Wasps are DANGEROUS

- They are aggressive if threatened or swatted.
- They can sting multiple times, which has the potential to kill.
- Wasps can release a pheromone to alert others to attack if threatened or swatted.
- Their stings can cause anaphylaxis to allergic individuals, which can be fatal.
- They can crawl into drink cans and be accidentally swallowed, which can lead to potentially fatal breathing difficulties.

## Wasps may be in your backyard

- They nest in holes dug in the ground or build nests in roof voids and cavities.
- They feed up to 500 metres from their nest.
- They are attracted to compost heaps, rubbish bins, pet food bowls, chicken scraps, flower gardens, hardwood fencing/decking, woodpiles, food and soft drink cans.



## What do nests look like?

Nests are often built underground and just appear as a hole, which can be hard to spot. Look for a stream of wasps flying to and from the ground or from wall cavities or under verandas.

Wasps often fly a direct route back to the nest after feeding, which can guide you to the nest. Do not disturb nests as the wasps will attack you en masse.

## What do European Wasps look like?

- Bright yellow body with black triangle-shaped markings.
- Yellow legs and long black antenna.
- Roughly same size and shape as a bee.
- Wasp queens are about 20mm long.
- Workers are slightly smaller at about 15mm long.
- Wings folded when at rest.

## Why they are a problem for us all

Wasp numbers in Braidwood reached concerning levels last year. They are likely to affect you, your family and anyone visiting Braidwood. There is the real possibility that they could shut down businesses.

European Wasps have also been known to attack farm animals and pets.

We need a collective effort across Braidwood this season to bring numbers down.

